

CERTIFICATE OF LOCATION OF GOVERNMENT CORNER

E 1/4 Corner of Section 18, Township 108N, Range 40W, 5TH P.M.

STATE OF MINNESOTA, County of MURRAY

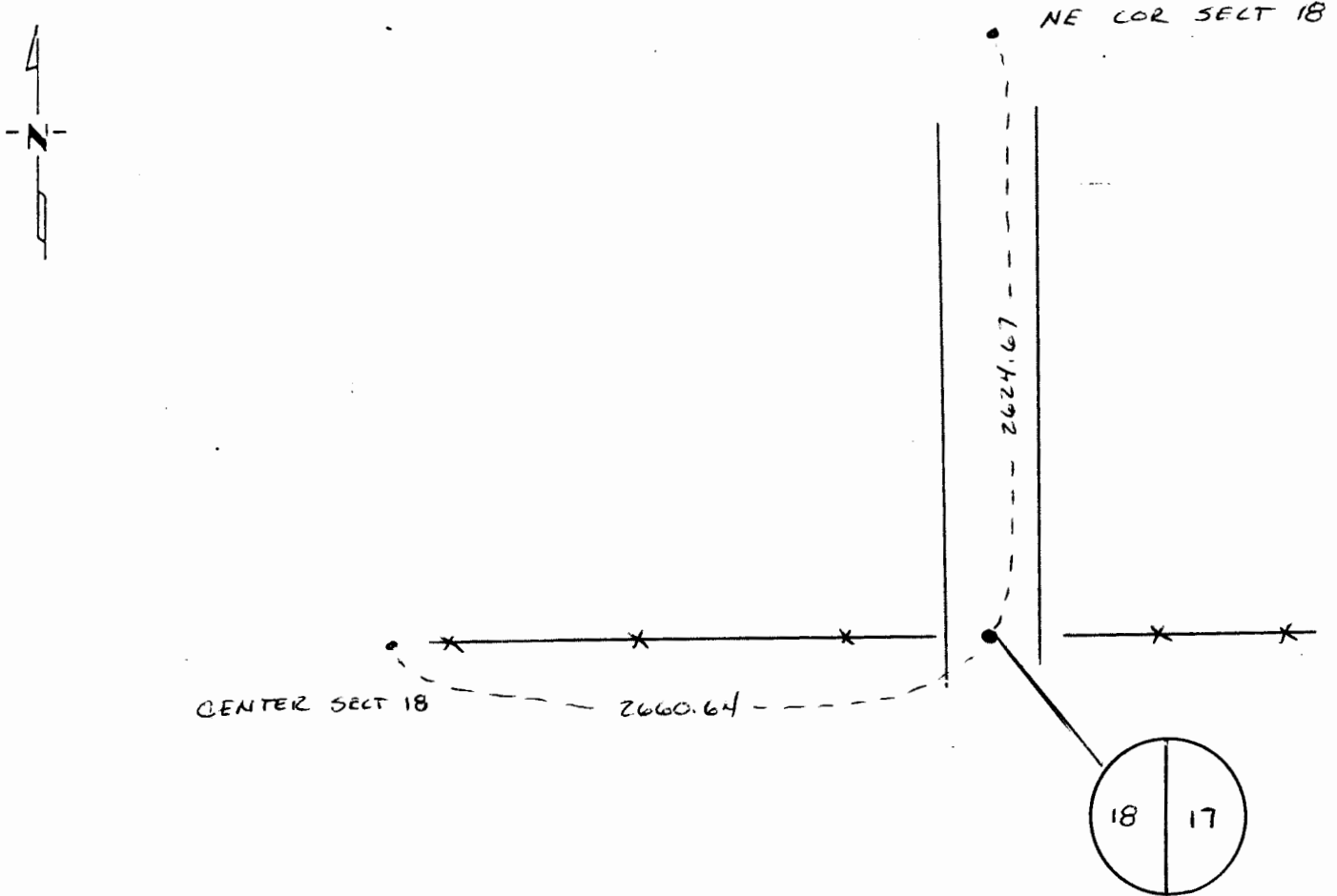
At the corner location shown on the sketch:

On 10/26/91 found a 5x5" STONE 3 1/2 FT BELOW SURFACE
DATE

left monument as found, lowered monument, removed monument (explain)

On 10/26/91 placed a PLACED 5/8" X 30" IRON STAKE WITH RLS 6700 CAP
DATE
OVER CENTER OF STONE. 3" BELOW SURFACE

SKETCH OF REFERENCE TIES



AG-LAND ENGINEERING RUTHTON, MN

Statement of evidence relative to this corner location is on back of page.

I hereby certify that this document and the data contained herein was prepared by me or under my direct supervision.

C. P. [Signature] 11-3-91
SIGNATURE DATE

Registration No. 6700

Land Surveyor, Professional Engineer

County Surveyor, County Engineer

OFFICE OF THE COUNTY RECORDER

County of MURRAY

I hereby certify that this document was filed in the Co. Recorders office at _____ .M. on the _____ day of _____ A.D., 19__

County Recorder [Signature]

By NOV 7 1991, Deputy

DOCUMENT NO. _____